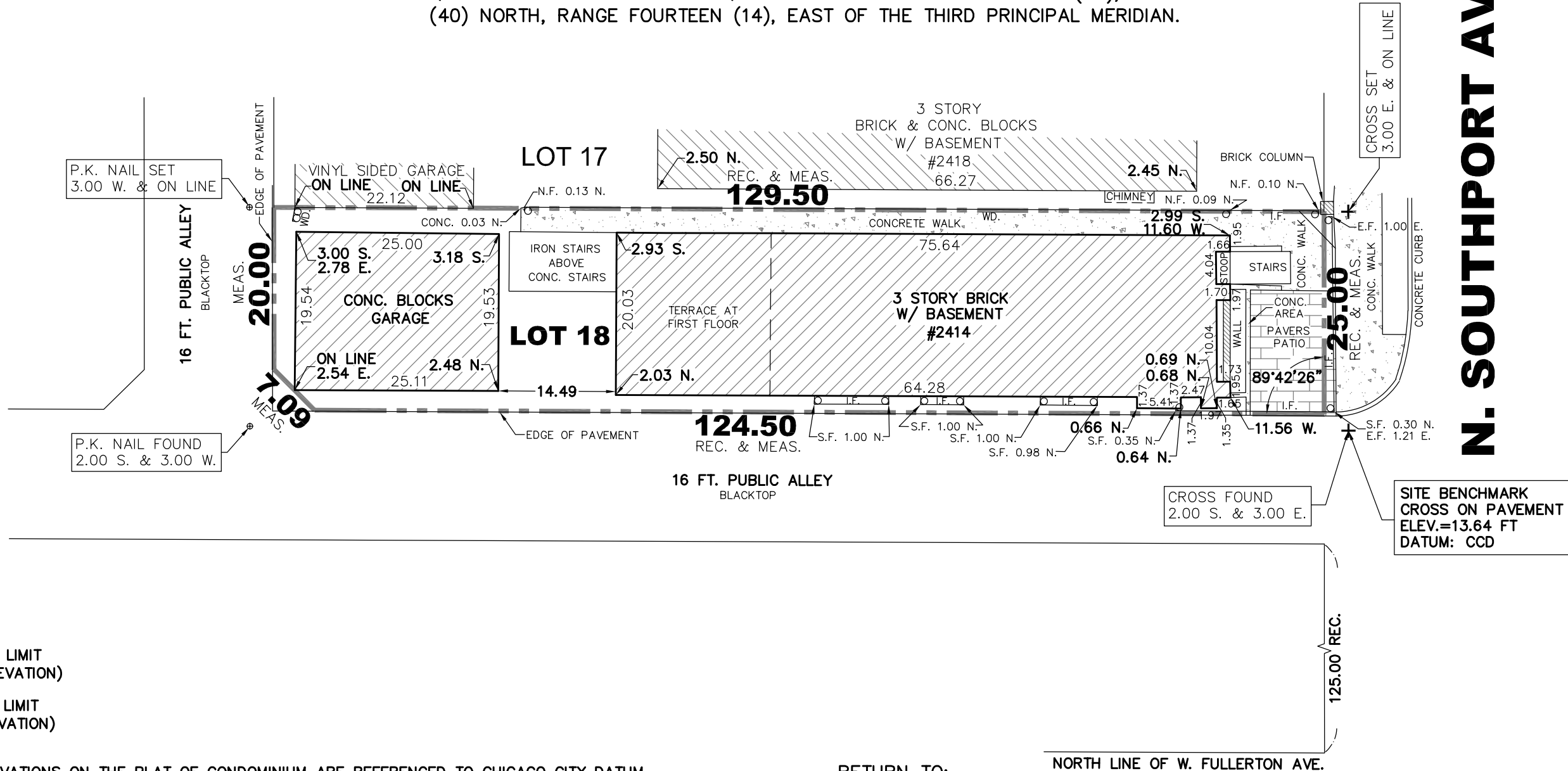


# 2414 NORTH SOUTHPORT AVENUE CONDOMINIUM

LOT EIGHTEEN (18) IN BLOCK ONE (1) IN WILLIAM HAHNE'S SUBDIVISION OF THE SOUTHEAST QUARTER OF THE SOUTHWEST QUARTER OF SECTION TWENTY-NINE (29), TOWNSHIP FORTY (40) NORTH, RANGE FOURTEEN (14), EAST OF THE THIRD PRINCIPAL MERIDIAN.

BEARINGS ARE SHOWN FOR ANGULAR REFERENCE ONLY  
AND ARE NOT RELATED TO TRUE OR MAGNETIC NORTH



## N. SOUTHPORT AVE.

U.L.—UPPER LIMIT  
(CEILING ELEVATION)

L.L.—LOWER LIMIT  
(FLOOR ELEVATION)

- ALL ELEVATIONS ON THE PLAT OF CONDOMINIUM ARE REFERENCED TO CHICAGO CITY DATUM SITE BENCHMARK SET CROSS FOUND (SEE SHEET 1 OF 6)
- HORIZONTAL BOUNDARIES OF UNITS ARE FORMED BY THE INTERIOR FINISHED SURFACES OF THE PERIMETER WALLS AND LATERAL EXTENSIONS THEREOF.
- VERTICAL BOUNDARIES OF UNITS ARE FORMED BY THE INTERIOR SURFACE OF FINISHED FLOOR AND THE INTERIOR FINISH SURFACE OF THE CEILING.
- ALL AREAS OUTSIDE OF UNITS ARE COMMON ELEMENT UNLESS OTHERWISE NOTED.
- AREAS LABELED WITH "L.C.E." ARE LIMITED COMMON ELEMENT SERVING DESIGNATED UNITS.
- AREAS LABELED WITH "C.E." ARE COMMON ELEMENT UNLESS OTHERWISE NOTED.
- RESIDENTIAL PROPERTIES ARE SUBJECT TO THE DECLARATION OF COVENANTS, CONDITIONS, RESTRICTIONS AND EASEMENTS: RECIPROCAL EASEMENT AGREEMENT.

RETURN TO:  
CHICAGO TITLE  
BOX 333



NORTH LINE OF W. FULLERTON AVE.

STATE OF ILLINOIS) S.S.  
COUNTY OF COOK)

ANDREW SPIEWAK LAND SURVEYOR, INC., A PROFESSIONAL DESIGN FIRM, LAND SURVEYING CORPORATION, LICENSE No.: 184.006518 HEREBY CERTIFIES THAT A SURVEY HAS BEEN MADE UNDER THE DIRECTION AND SUPERVISION OF AN ILLINOIS PROFESSIONAL LAND SURVEYOR OF THE ABOVE DESCRIBED PROPERTY AND THAT THE PLAT HEREON DRAWN IS A CORRECT REPRESENTATION OF SAID SURVEY. THIS PROFESSIONAL SERVICE CONFORMS TO THE CURRENT ILLINOIS MINIMUM STANDARDS FOR BOUNDARY SURVEYS.

THE FIELD WORK WAS COMPLETED ON 4th DAY OF DECEMBER A.D. 2024 .  
DATE OF PLAT: 2nd DAY OF JANUARY A.D. 2025 .

BY: *Andrzej F. Spiewak*

ILLINOIS PROFESSIONAL LAND SURVEYOR  
ANDRZEJ F. SPIEWAK LICENSE No.: 035.003178  
LICENSE EXPIRES 11/30/2026

PROFESSIONAL DESIGN FIRM  
LAND SURVEYING CORPORATION, No.: 184.006518  
LICENSE EXPIRES 04/30/2025

ANDREW SPIEWAK LAND SURVEYOR, INC.  
DBA SPIEWAK CONSULTING  
PROFESSIONAL DESIGN FIRM  
LICENSE NO.: 184.006518  
1030 W. HIGGINS RD. STE. 218, PARK RIDGE, IL 60068  
phone: (773) 853-2672 (630) 351-9489  
www.landsurveyors.pro andrew@landsurveyors.pro

PLAT OF CONDOMINIUM  
SURVEY  
2414 N. SOUTHPORT AVE.  
CHICAGO, IL 60614  
P.I.N.: 14-29-320-032-0000

ORDERED BY:  
DAN LAUER  
EZMB LLC

SURVEYED BY: SJ  
DRAWN BY: RAM  
REVIEWED BY: AFS

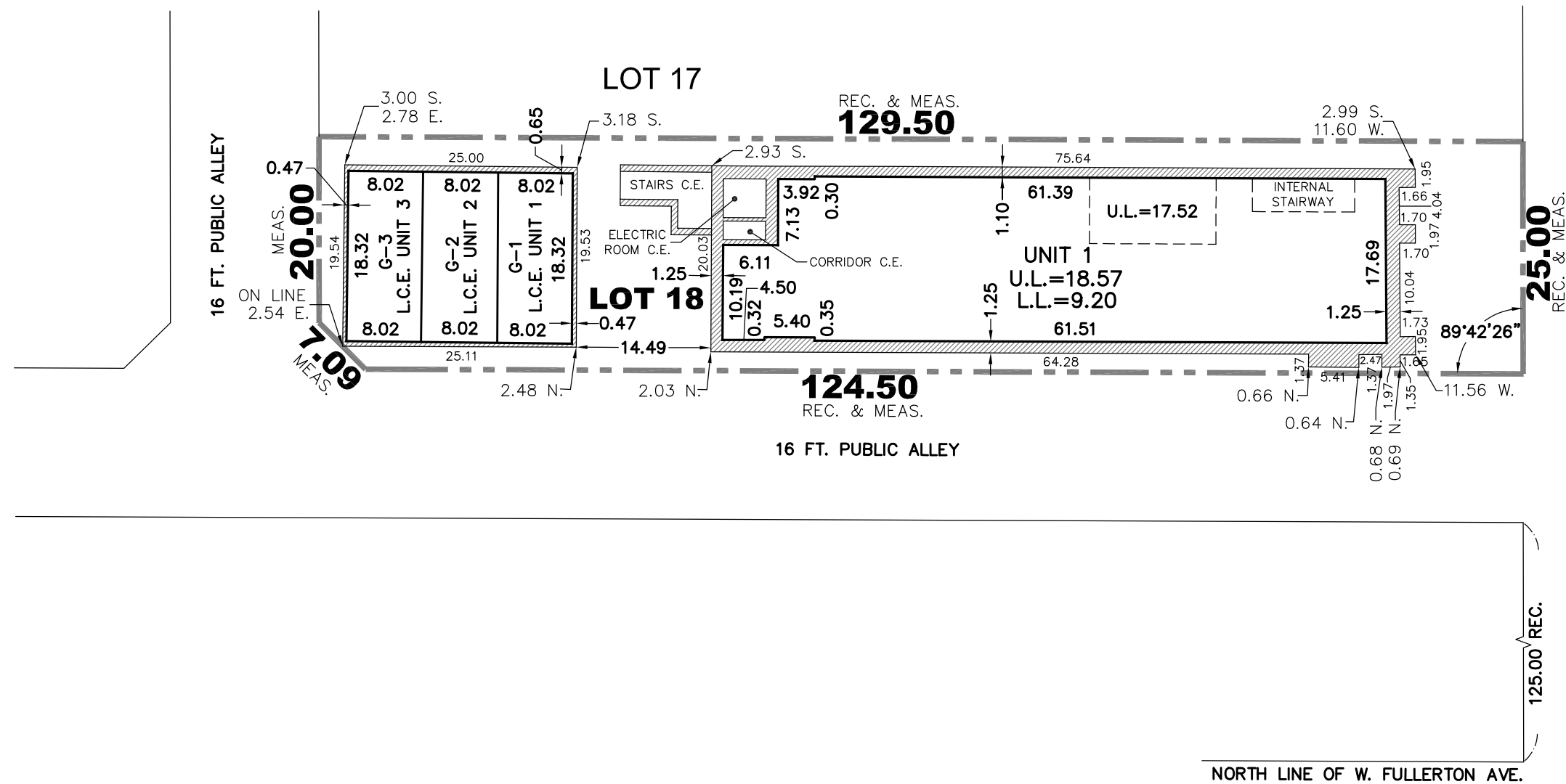
PROJECT No: 616-24  
(G159-23)

SCALE: 1" = 15'

SHEET No.

# 2414 NORTH SOUTHPORT AVENUE CONDOMINIUM

LOWER LEVEL FLOOR PLAN



## N. SOUTHPORT AVE.

BEARINGS ARE SHOWN FOR ANGULAR REFERENCE ONLY  
AND ARE NOT RELATED TO TRUE OR MAGNETIC NORTH



ANDREW SPIEWAK LAND SURVEYOR, INC.  
DBA SPIEWAK CONSULTING  
PROFESSIONAL DESIGN FIRM  
LICENSE NO.: 184.006518  
1030 W. HIGGINS RD. STE. 218, PARK RIDGE, IL 60068  
phone: (773) 853-2672 (630) 351-9489  
www.landsurveyors.pro andrew@landsurveyors.pro

PLAT OF CONDOMINIUM  
LOWER LEVEL  
2414 N. SOUTHPORT AVE.  
CHICAGO, IL 60614

ORDERED BY:  
DAN LAUER  
EZMB LLC

SURVEYED BY: SJ  
DRAWN BY: RAM  
REVIEWED BY: AFS

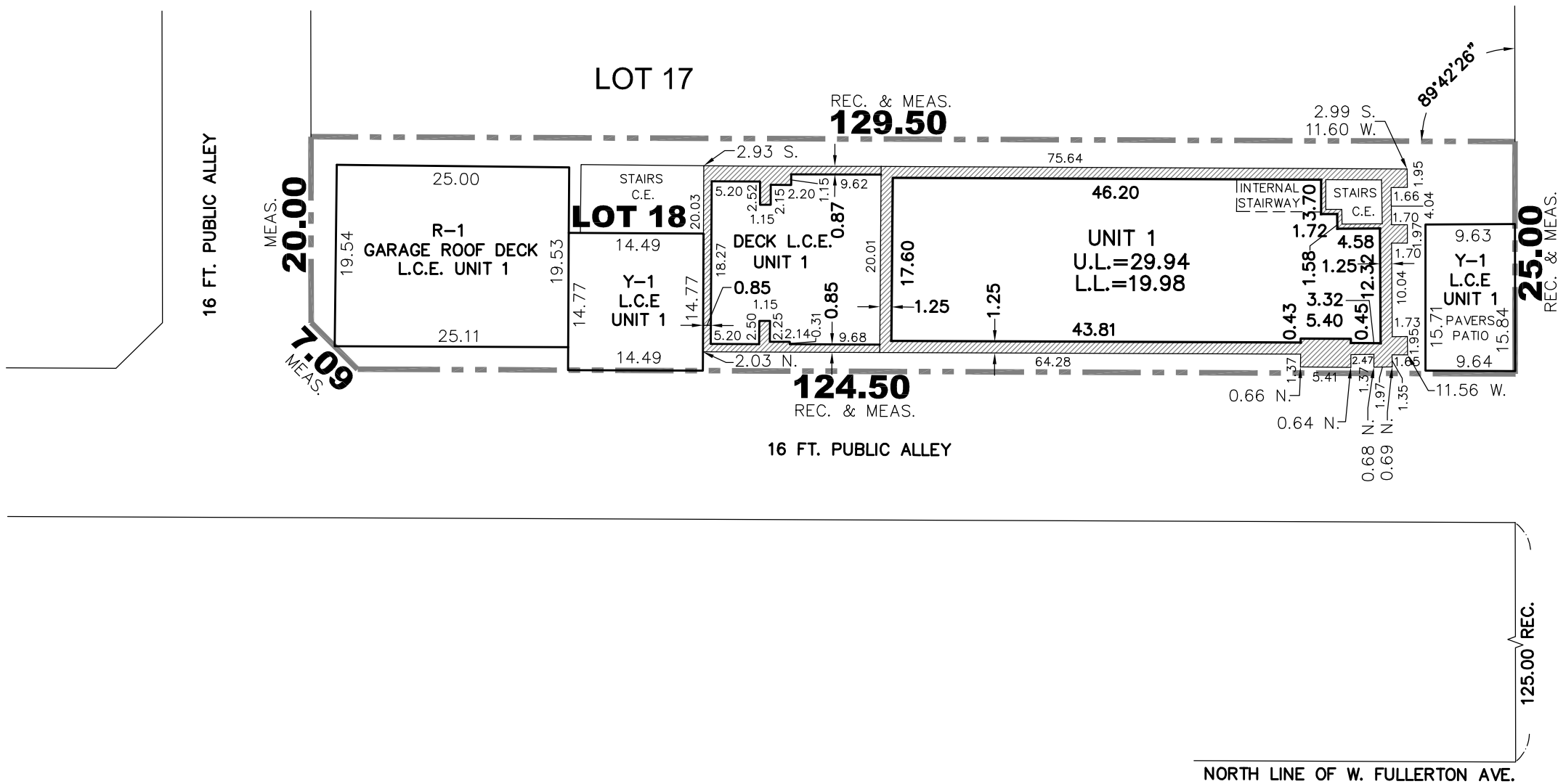
PROJECT No: 616-24  
(G159-23)

SCALE: 1" = 15'

SHEET No.  
2 of 6

# 2414 NORTH SOUTHPORT AVENUE CONDOMINIUM

FIRST FLOOR PLAN



## N. SOUTHPORT AVE.

BEARINGS ARE SHOWN FOR ANGULAR REFERENCE ONLY  
AND ARE NOT RELATED TO TRUE OR MAGNETIC NORTH



ANDREW SPIEWAK LAND SURVEYOR, INC.  
DBA SPIEWAK CONSULTING  
PROFESSIONAL DESIGN FIRM  
LICENSE NO.: 184.006518  
1030 W. HIGGINS RD. STE. 218, PARK RIDGE, IL 60068  
phone: (773) 853-2672 (630) 351-9489  
www.landsurveyors.pro andrew@landsurveyors.pro

PLAT OF CONDOMINIUM  
FIRST FLOOR  
2414 N. SOUTHPORT AVE.  
CHICAGO, IL 60614

ORDERED BY:  
DAN LAUER  
EZMB LLC

SURVEYED BY: SJ  
DRAWN BY: RAM  
REVIEWED BY: AFS

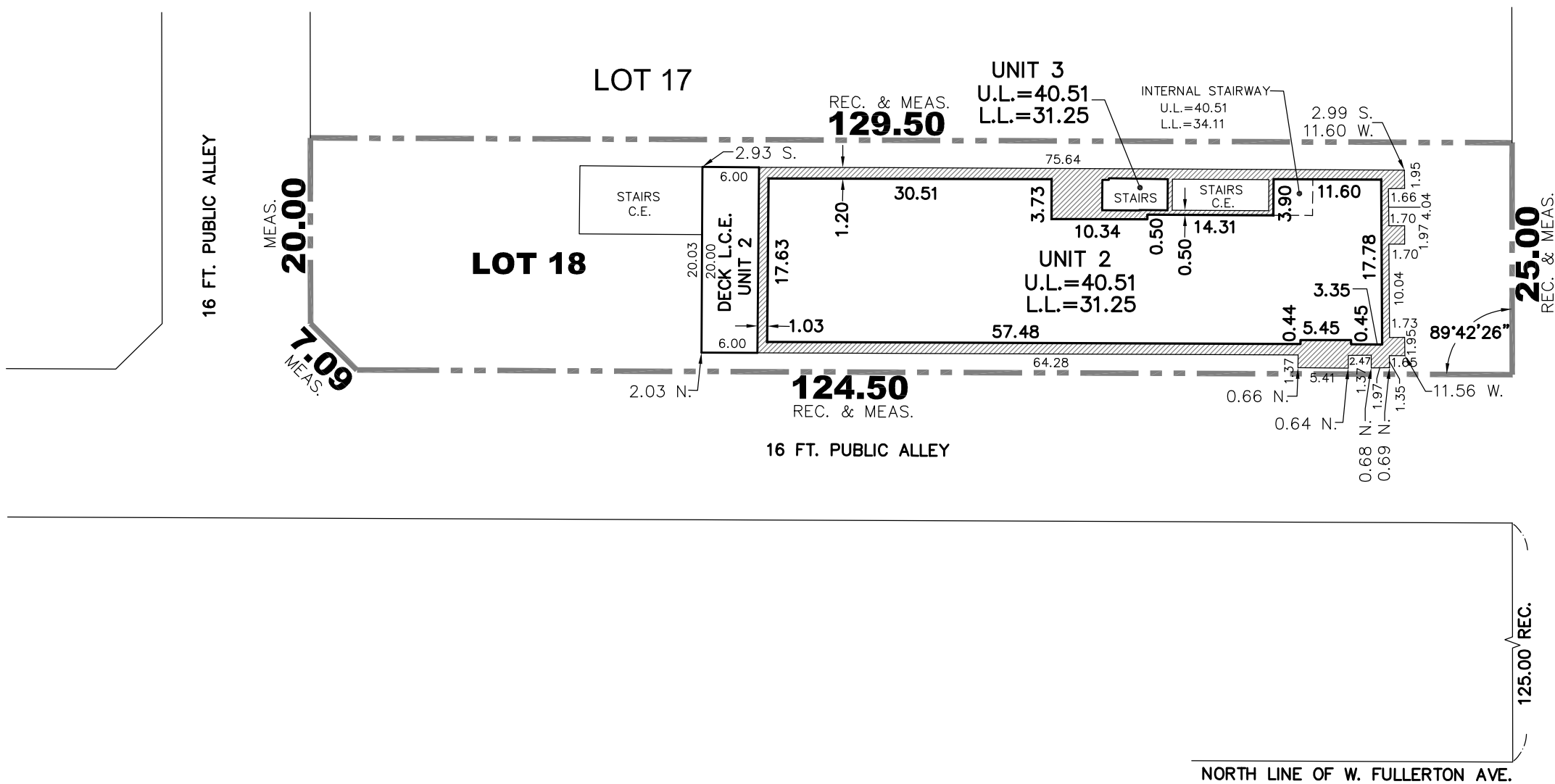
PROJECT No: 616-24  
(G159-23)

SCALE: 1" = 15'

SHEET No.  
3 of 6

# 2414 NORTH SOUTHPORT AVENUE CONDOMINIUM

SECOND FLOOR PLAN



## N. SOUTHPORT AVE.

BEARINGS ARE SHOWN FOR ANGULAR REFERENCE ONLY  
AND ARE NOT RELATED TO TRUE OR MAGNETIC NORTH



ANDREW SPIEWAK LAND SURVEYOR, INC.

DBA SPIEWAK CONSULTING

PROFESSIONAL DESIGN FIRM

LICENSE NO.: 184.006518

1030 W. HIGGINS RD. STE. 218, PARK RIDGE, IL 60068

phone: (773) 853-2672

(630) 351-9489

www.landsurveyors.pro andrew@landsurveyors.pro

PLAT OF CONDOMINIUM  
SECOND FLOOR

2414 N. SOUTHPORT AVE.

CHICAGO, IL 60614

ORDERED BY:  
DAN LAUER  
EZMB LLC

SURVEYED BY: SJ  
DRAWN BY: RAM  
REVIEWED BY: AFS

PROJECT No: 616-24  
(G159-23)

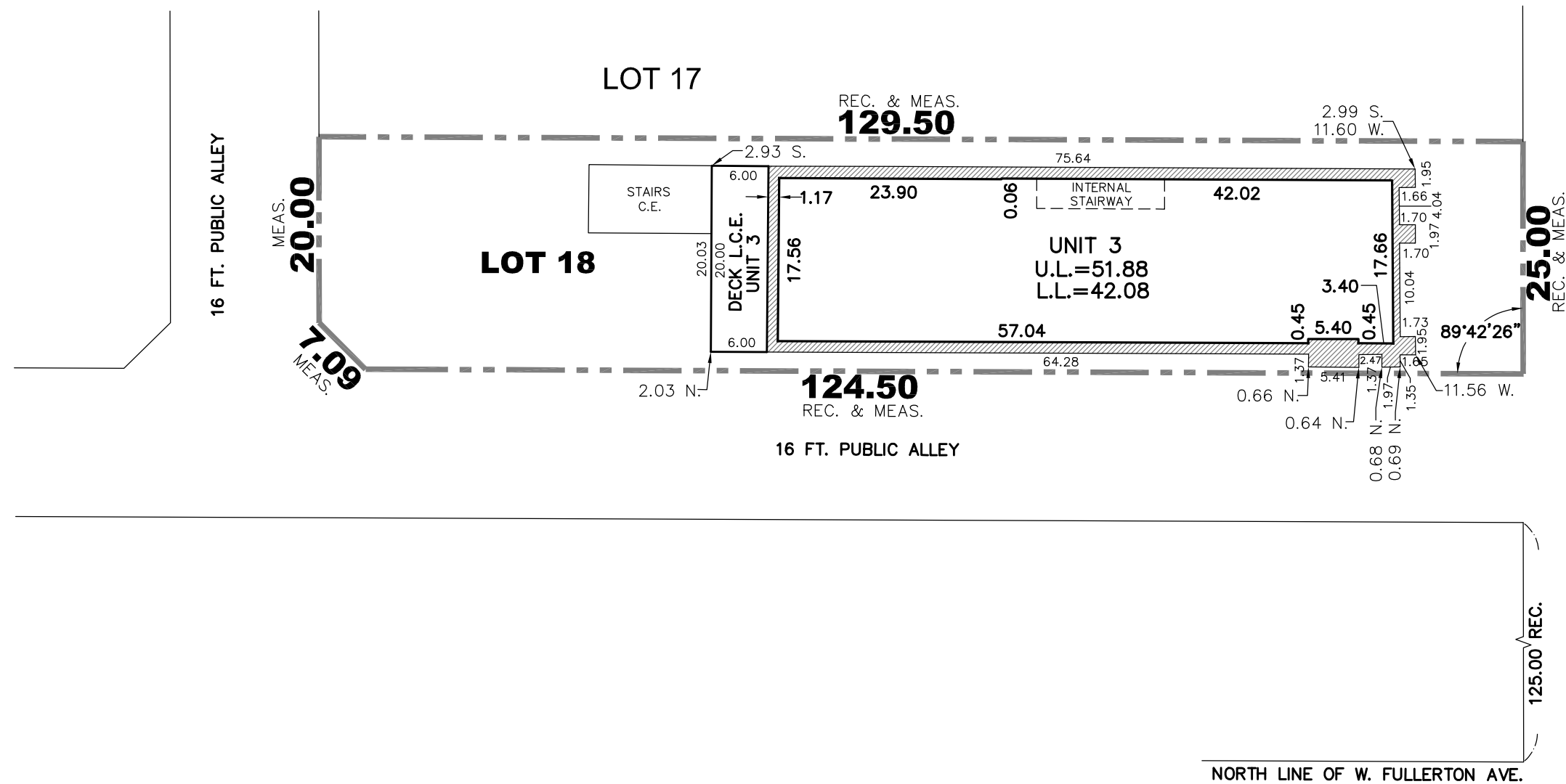
SCALE: 1" = 15'

SHEET No.

4 of 6

# 2414 NORTH SOUTHPORT AVENUE CONDOMINIUM

THIRD FLOOR PLAN



**N. SOUTHPORT AVE.**

BEARINGS ARE SHOWN FOR ANGULAR REFERENCE ONLY  
AND ARE NOT RELATED TO TRUE OR MAGNETIC NORTH



ANDREW SPIEWAK LAND SURVEYOR, INC.  
DBA SPIEWAK CONSULTING  
PROFESSIONAL DESIGN FIRM  
LICENSE NO.: 184.006518  
1030 W. HIGGINS RD. STE. 218, PARK RIDGE, IL 60068  
phone: (773) 853-2672 (630) 351-9489  
www.landsurveyors.pro andrew@landsurveyors.pro

PLAT OF CONDOMINIUM  
THIRD FLOOR  
2414 N. SOUTHPORT AVE.  
CHICAGO, IL 60614

ORDERED BY:  
DAN LAUER  
EZMB LLC

SURVEYED BY: SJ  
DRAWN BY: RAM  
REVIEWED BY: AFS

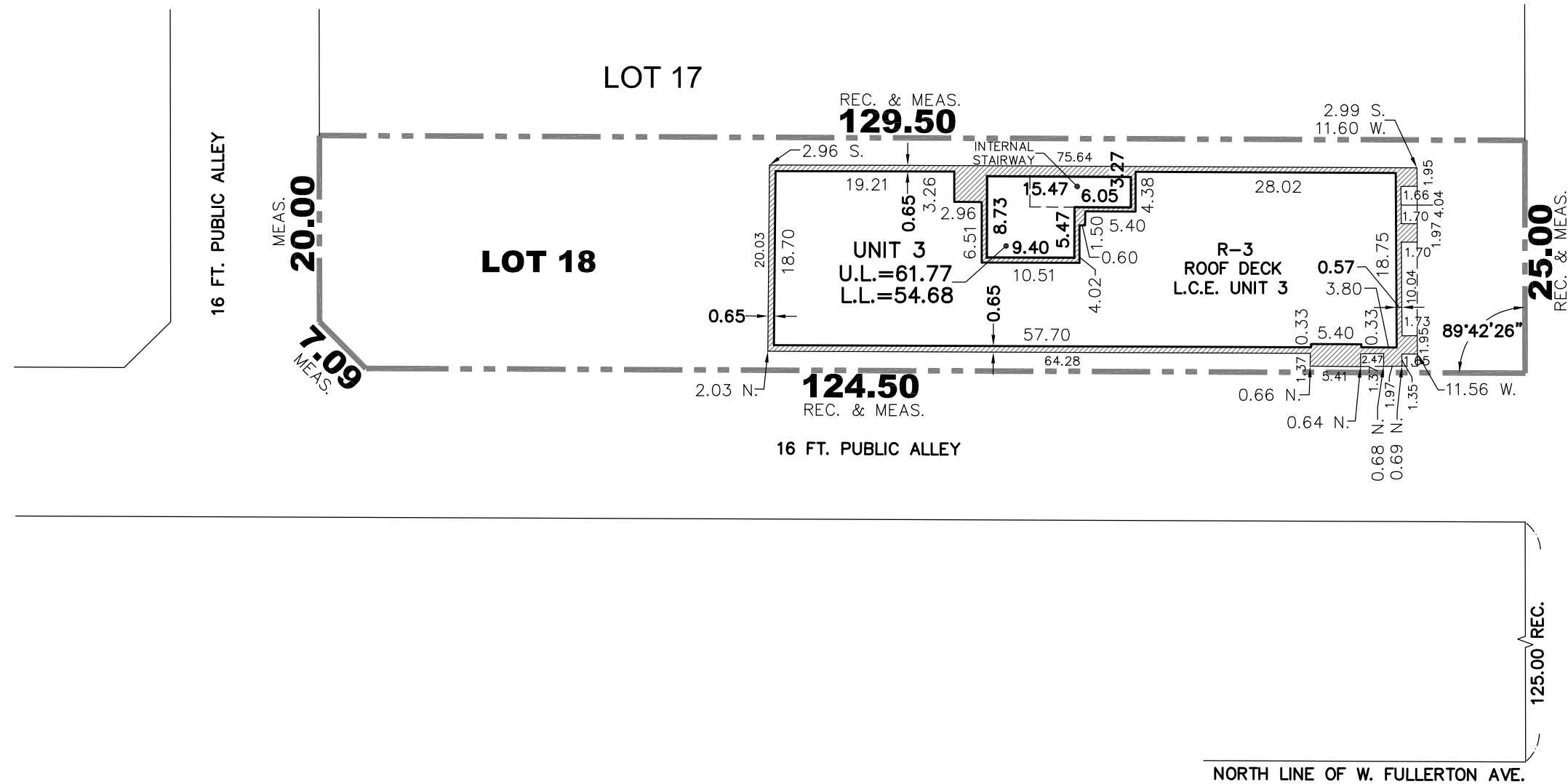
PROJECT No: 616-24  
(G159-23)

SCALE: 1" = 15'

SHEET No.  
5 of 6

# 2414 NORTH SOUTHPORT AVENUE CONDOMINIUM

ROOF PLAN



**N. SOUTHPORT AVE.**

BEARINGS ARE SHOWN FOR ANGULAR REFERENCE ONLY  
AND ARE NOT RELATED TO TRUE OR MAGNETIC NORTH



ANDREW SPIEWAK LAND SURVEYOR, INC.  
DBA SPIEWAK CONSULTING  
PROFESSIONAL DESIGN FIRM  
LICENSE NO.: 184.006518  
1030 W. HIGGINS RD. STE. 218, PARK RIDGE, IL 60068  
phone: (773) 853-2672 (630) 351-9489  
www.landsurveyors.pro andrew@landsurveyors.pro

PLAT OF CONDOMINIUM  
ROOF  
2414 N. SOUTHPORT AVE.  
CHICAGO, IL 60614

ORDERED BY:  
DAN LAUER  
EZMB LLC

SURVEYED BY: SJ  
DRAWN BY: RAM  
REVIEWED BY: AFS

PROJECT No: 616-24  
(G159-23)

SCALE: 1" = 15'

SHEET No.  
6 of 6